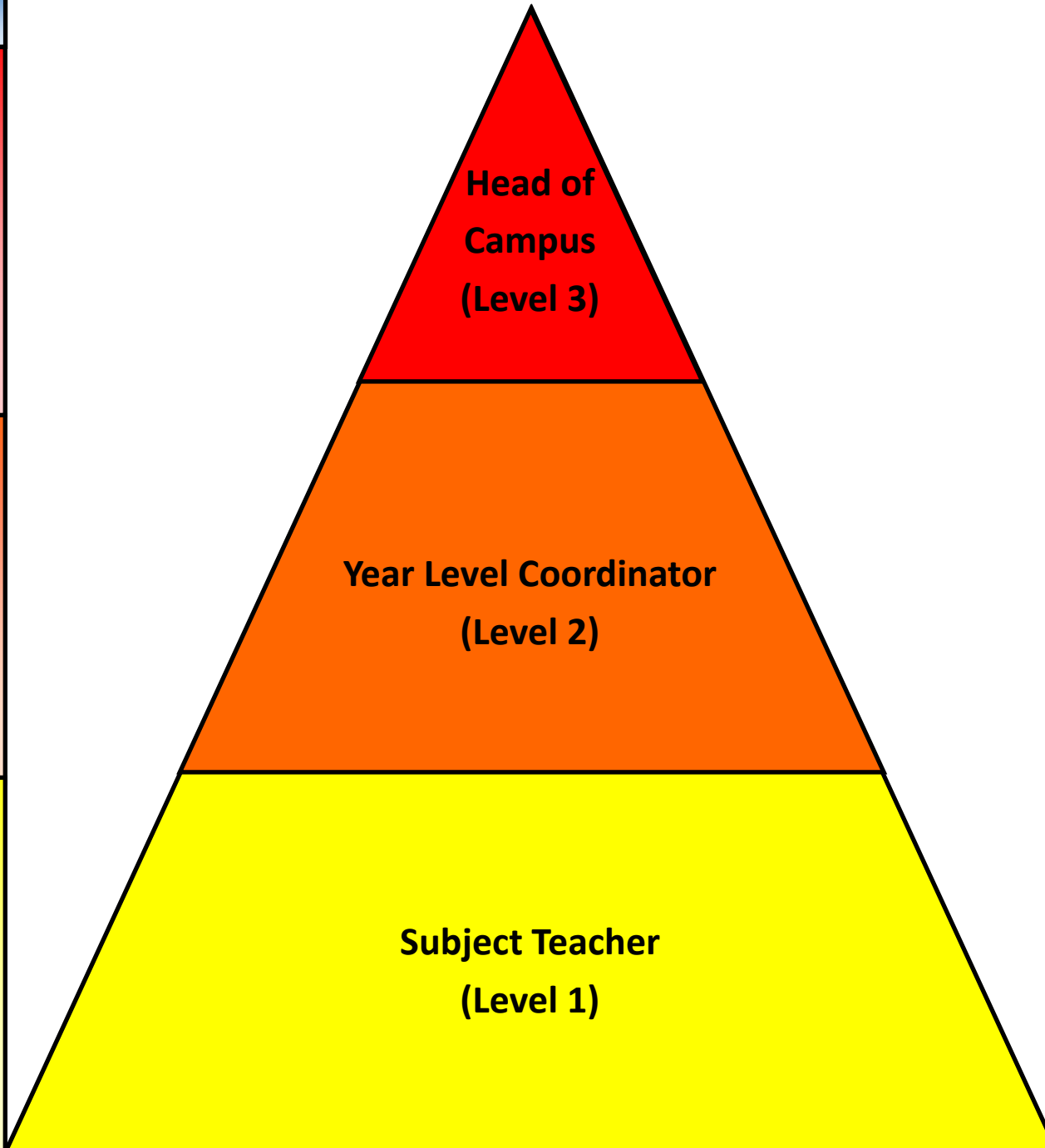


Sadadeen Campus Behaviour Flow Chart

Examples of Behaviours
<ul style="list-style-type: none"> •Violent/dangerous behavior e.g. fighting, punching, scratching, biting •Inappropriate objects or substances that are detrimental to the safety of self and others •Swearing at and threatening staff •Bullying/cyber bullying, harassment •Continued inappropriate behaviour will result in a student file handover to the Principal for a conversation with family to discuss moving forward with enrolment
<ul style="list-style-type: none"> •Refusal of staff instructions •Persistent inappropriate language •Repeated (level 1) behaviour
<ul style="list-style-type: none"> •Attention seeking •Distracting others •Littering •Being in restricted areas •Not following basic teacher instructions •Interfering with others property •Late to class •Disorganized for class (equipment) •Inappropriate language



Procedures and Guidelines
<p>STEPS TO RESOLUTION:</p> <ul style="list-style-type: none"> •Student to be removed form class (parents are to be contacted and meet with the Head of Campus and Year Level Coordinator or his/her delegate) <p>CORRECTIVE PATHWAY:</p> <ul style="list-style-type: none"> •Restorative Conference session •Loss of yard time •Student exclusion •Parent/Teacher/Student conference •Suspension
<p>STEPS TO RESOLUTION:</p> <ul style="list-style-type: none"> •Remind, Warn, Act •2nd contact with parent •What can we do to resolve the issue before moving to Level 3? •Continue restorative conversations <p>CORRECTIVE PATHWAY:</p> <ul style="list-style-type: none"> •Restorative Conversations •Teachers own strategies
<p>CORRECTIVE BEHAVIOUR STRATEGIES:</p> <ul style="list-style-type: none"> •Peer praise, set a positive tone •Clear classroom expectations •Remind, Warn, Act - 1st contact made with parent •Display & refer to class rules •Staff engage Homeroom teacher in Restorative Conversations/Agreements/Discussions •Positive behaviour systems •All actions documented and emailed to Homeroom teacher